

Pin bracket for mounting a bimetallic and aluminum radiator (to the wall)

APPLICATION METHOD:

The bracket is intended for fastening sectional aluminum and bimetallic radiators. Painted with white powder paint. The bracket is equipped with a polypropylene dowel. Universal, suitable for radiators of various manufacturers.



SPECIFICATION:

- material: steel;
- color: white;
- dowel included.

Art.	Name	Diameter, mm	Size, mm	Packaging, pcs
0101042810	Flat pin bracket	7	180/170	100
0101042811	Flat pin bracket	7	220	100
0101042812	Flat pin bracket	7	250	100
0101042809	Bracket pin flat (saber)	7	180	100
0101040101	Flat pin bracket	8	170	300
0101040103	Flat pin bracket	8	220	200
0101040104	Flat pin bracket	8	250	200

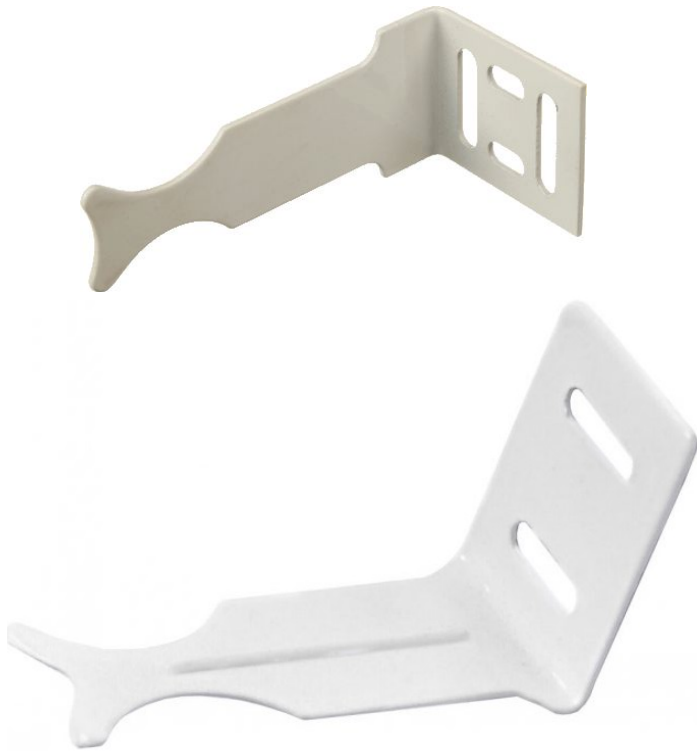
Corner bracket for mounting a bimetallic and aluminum radiator (to the wall)

APPLICATION METHOD:

The corner universal double-sided bracket is designed for fastening sectional aluminum and bimetallic radiators. Painted with white powder paint. Universal, suitable for radiators of various manufacturers.

SPECIFICATION:

- material: steel;
- color: white.



Art.	Name	Dimensions, mm	Packaging , pcs
0101040108	Double-sided corner bracket (reinforced)	100*60*50	200
0101042808	Universal corner bracket	98*45*40	100